



新加坡金钻珠宝商会  
SINGAPORE JEWELLERS ASSOCIATION

9<sup>th</sup> June 2021

Dear Members,

## **SUPPORT MEASURES FOR BUSINESSES AND INDIVIDUALS FOR PHASE 2 (HEIGHTENED ALERT)**

The Government has put in place enhanced [support measures to support businesses and individuals who are significantly impacted by restrictions during Phase 2 \(Heightened Alert\)](#) :

### **Jobs Support Scheme (JSS)**

- JSS has been enhanced for significantly affected sectors from 16 May to 13 June (Refer to Annex A in [link](#) for details on supported sectors).
- Businesses that are significantly affected by the tightened measures and would like to appeal for enhanced JSS support may do so at <https://www.iras.gov.sg/irashome/schemes/businesses/jobs-support-scheme--JSS/>

### **Rental Support Scheme**

- Rental relief will be provided to SMEs and eligible NPOs with an annual revenue of <\$100m, who are tenant-occupiers of qualifying commercial properties. (Refer to Annex B in [link](#) for eligible properties).
- For government-owned commercial properties, one month rental relief will be provided for qualifying tenants.
- For privately-owned commercial properties, IRAS will disburse a 0.5 month rental relief cash payout directly to qualifying tenants as part of the new Rental Support Scheme (Refer to Annex C in [link](#) for details of the scheme).
- Property owners who run a SME business or an eligible NPO on their qualifying commercial property are also eligible for the Rental Support Scheme.
- Most qualifying tenants and owner-occupiers will receive the cash payout automatically. The cash payout will not be disbursed automatically to tenants who only rent part of a property, or to tenants who rent a mixed-use property (e.g. a shophouse for both retail and residential use) and/or to licensees. Such businesses should submit an application to IRAS and provide supporting documents. IRAS will provide more details of the Rental Support Scheme and its application process on IRAS website by mid-June 2021.

**NOTE :** In addition, to further safeguard the health of employees and customers, there is an **updated guidance on additional Safe Management Measures (SMM) as attached**. This is to be adopted on top of the minimum standards specified in the [national](#) and [sectoral](#) measures.

Regards,

Singapore Jewellers Association



2021年6月9日

致：全体会员

## “高警戒解封第二阶段”企业和个人的援助措施

政府推出以下临时援助措施，以协助企业和个人渡过“高警戒解封第二阶段”防疫措施对他们造成的严重影响。请浏览([Support Measures Enhanced to Help Individuals and Business during Phase 2 \(Heightened Alert\)](#))了解更多详细信息。

### 雇佣补贴计划 (JSS)

- 雇佣补贴计划主要是援助从5月16日至6月13日期间，受到重大影响的企业。（有关支持企业的详细信息，请参阅 [link](#) 附件 A）。
- 防疫措施收紧受到严重影响并希望得到雇佣补贴计划加强援助的企业，请浏览 <https://www.iras.gov.sg/irashome/schemes/businesses/jobs-support-scheme--JSS/>

### 租金援助计划 (RSS)

- 租用私人商业房产的中小企业和非营利机构，年营收不超过1亿新元，且符合条件的商业房产的租户提供租金援助。（有关符合条件的房产，请参阅 [link](#) 附件 B）。
- 租用政府拥有的商业房产并符合条件的租户，将获得一个月的租金减免。
- 租用私人拥有的商业房产的租户，国内税务局将给予额外援助，直接发放相等于半个月租金的款额给符合条件的租户。（有关计划的详细信息，请参阅 [link](#) 附件 C）。
- 使用自家房产经营中小企业和非营利机构符合条件的业者，也被归纳在租金援助计划内。
- 多数符合条件的租户和拥有自家房产的业主将自动获得现金支付。现金不会自动分发给只租用部分物业的租户，或租用混合用途物业（例如零售和住宅用途的店屋）和持特许经营权的租户。此类企业应向税务局提出申请并提呈相关文件。税务局将在2021年6月中旬之前在其网站上提供有关租金援助计划及其申请流程的更多详细信息。

**注：**此外，为了进一步保护员工和客户的健康，**随函附上有关其他安全管理措施 (SMM) 的更新指南 (Updated Guidance Note on Safe Management Measures for Companies)**。这也是国家([national](#))和各相关行业([sectoral](#))规定的最低标准措施准则。

感谢您的关注！

新加坡金钻珠宝商会

# Supporting Workers and Businesses

**\$800 million** to support affected businesses through Phase 2 (Heightened Alert)



## Additional Support for F&B, Sports, and Performing Arts

- Jobs Support Scheme (JSS) enhanced to **50%** for period of Phase 2 (Heightened Alert) from 16 May to 13 Jun '21.
- Benefits F&B, gyms and fitness studios\*, performing arts groups, and arts education centres.

*\*JSS Support will replace the operating grant for gyms and fitness studios under the Sports Resilience Package from 16 May to 13 Jun '21.*



## Additional Support for Retail, Family Attractions, and Personal Care Services

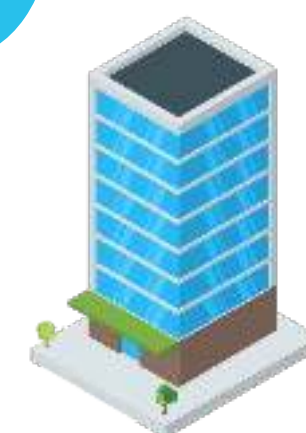
- JSS enhanced to **30%** for period of Phase 2 (Heightened Alert) from 16 May to 13 Jun '21.
- Benefits retail\*, cinema operators, museums, art galleries, historical sites, indoor playgrounds, other family entertainment centres, and affected personal care services.

*\*Supermarkets, convenience stores, and online retailers are not eligible.*



## Rental Support for SME and NPO Tenant-Occupiers of Commercial Properties

- **Half-month** rental relief cash payout disbursed by IRAS to qualifying tenants.
- **1-month** rental relief for qualifying tenants on government-owned commercial premises.





# Enhancements to Jobs Support Scheme (JSS)

To offset and protect local employees' wages for sectors affected by Phase 2 (Heightened Alert) measures



## Sectors with Enhanced JSS Support

50%

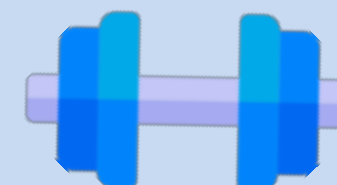
Licensed Food Shops & Food Stalls



Performing Arts & Arts Education



Gyms & Sports Facilities\*



\*JSS support will replace the operating grant for gyms & fitness studios under the Sports Resilience Package from 16 May to 13 Jun '21

30%

Qualifying Retail Outlets\*\*



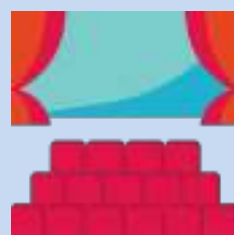
Museums, Art Galleries, & Historical Sites



Affected Personal Care Services



Cinema Operators



Family Entertainment Centres



\*\*Supermarkets, convenience stores, and online retailers are not eligible

## Duration of JSS Enhancements

- Payouts will be **enhanced for the period of Phase 2 (Heightened Alert)**, and will be disbursed in **Sep '21**.

← Payout Coverage →

Will be disbursed in:

Apr '21

May '21

Enhanced from  
16 May to 13 Jun

Jun '21

Sep '21

## UPDATED GUIDANCE NOTE ON SAFE MANAGEMENT MEASURES FOR COMPANIES

Dear Industry Partners,

Thank you for your support in combating COVID-19 thus far.

On 31 May 2021, PM Lee Hsien Loong shared the Government's plans to manage COVID-19, including increased testing, contact tracing and vaccinations. This note proposes additional Safe Management Measures (SMMs) that companies may wish to employ, to safeguard the health of your employees and customers. These additional SMMs are on top of the minimum standards specified in the national and sectoral rules (e.g. Requirements for Safe Management Measures at the workplace [www.mom.gov.sg/covid-19/requirements-for-safe-management-measures](http://www.mom.gov.sg/covid-19/requirements-for-safe-management-measures) ).

- [Test] Place employees on regular testing using alternative tests.** Companies whose employees are not on Polymerase Chain Reaction (PCR) Rostered Routine Testing (RRT)<sup>1</sup> may wish to consider putting your employees on regular testing using alternative tests such as Antigen Rapid Test (ART), especially if they are working in higher risk settings where there is a high density of people who are unmasked and in close proximity to one another for prolonged periods of time.
- [Trace] Manage COVID-19 Cases proactively.** Proactively manage potential contacts of COVID-19 cases at the workplace, to prevent clusters forming.
  - If an employee/visitor has tested positive for COVID-19, you should immediately ask any staff who were in close contact with the employee/visitor in the last 14 days (for example, working in the same zone or on the same shift) to self-isolate while MOH performs contact tracing. This will minimise the risk of further spread if any of them are infected.
  - When three or more COVID-19 cases that are epidemiologically linked are formed at your workplace, test all high risk<sup>2</sup> employees to detect additional cases before resuming operations. High risk employees are recommended to be placed on a 7-day Rostered Routine Testing after reopening.
- [Vaccinate] Encourage your workers to be vaccinated.** More vaccines will be delivered to Singapore over the next two months. Please encourage your workers to get vaccinated as soon as possible. Vaccines protect us, by lowering the risk of being infected, and reducing the severity of disease. The higher our vaccination rates, the faster we will be able to overcome COVID-19.

---

<sup>1</sup> RRT is a surveillance testing programme which involves recurrent PCR swab testing in a typical block of 14 days.

<sup>2</sup> Refers to close contacts of COVID-19 positive cases, and employees in work functions with close/extended contact with customers.

In addition to testing, tracing and vaccinating more aggressively, we urge companies to adhere strictly to prevailing SMMs, and update their workplace protocols to take into account the latest public health advisories.

4. **Enforce mask discipline.** Employees and patrons should use masks with good filtration capability. These include (a) disposable surgical masks with a minimum bacterial filtration efficiency (BFE) of 95%, and (b) reusable masks that are made of at least two layers of fabric, such as masks issued by the People's Association and Temasek Foundation. For more information on masks, you may refer to Health Science Authority's (HSA) article entitled "What you need to know about Masks" [www.hsa.gov.sg/consumer-safety/articles/details/what-you-need-to-know-about-masks](http://www.hsa.gov.sg/consumer-safety/articles/details/what-you-need-to-know-about-masks) .
  
5. **Avoid workplace gatherings.** All large meetings or events at the workplace should be avoided as far as possible. If such meetings/events have to be held physically and cannot be held virtually, they must be capped at 50 persons, with 1 metre safe distancing maintained between attendees. Food and drinks are also not allowed at work-related events. Employees should also not mingle with each other in social settings outside the workplace.
  
6. **Ventilate your workplace.** Workplaces should maximise fresh air intake, and ensure appropriate cleaning of recirculated air by keeping ventilation systems in good working order. If necessary, consider purchasing portable air cleaners with high-efficiency air filters such as HEPA filters, which are effective at removing virus aerosols. Please refer to the guidance note for detailed technical recommendations for premises according to the type of ventilation systems used <https://www1.bca.gov.sg/docs/default-source/docs-corp-news-and-publications/circulars/guidance-note-on-improving-ventilation-and-indoor-air-quality-in-buildings.pdf> .

Thank you for your cooperation in the fight against COVID-19.

**7 JUNE 2021**  
**Enterprise Singapore**